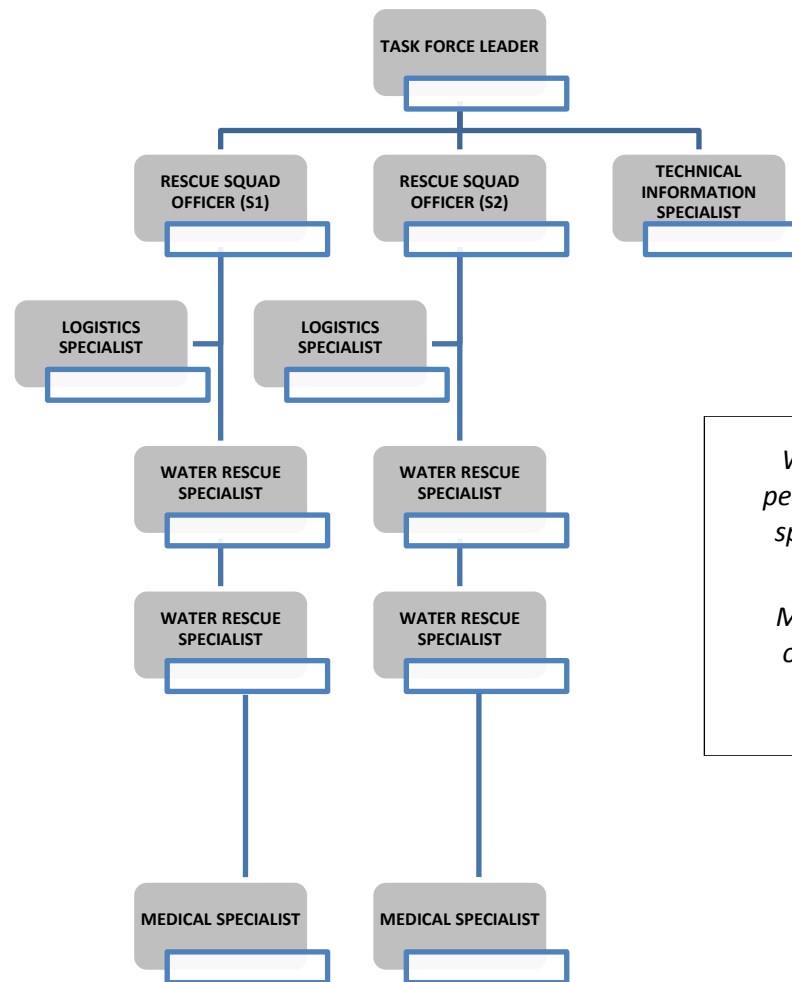


TYPE 2 SWIFTWATER/FLOOD RESCUE TEAM 12 PERSONNEL



With the exception of the TFL and TIS, all personnel must be qualified as water rescue specialists. At least 4 must be qualified as boat operators.

Medical Specialists must be EMT-P and all other personnel should be a minimum of EMT-B

Type II SW/Flood Rescue Team must be self-sufficient for up to 72 hours and capable of 24 hour operations. This team may also be embedded into a US&R task force with cross trained personnel.

See current US&R resource typing document for additional details, including equipment requirements.

This team must deploy with a minimum of two (2) motorized boats and water rescue equipment necessary to safely conduct rescue operations in all water environments. It is recommended that the team deploy with at least two (2) rigid hull (JON) boats and two (2) inflatable boats (IRB).