



**DESIGNATION:**

**NIMS TYPING:**

**DUTY OFFICER:**

**ACTIVATION:**

**PERSONNEL #:**

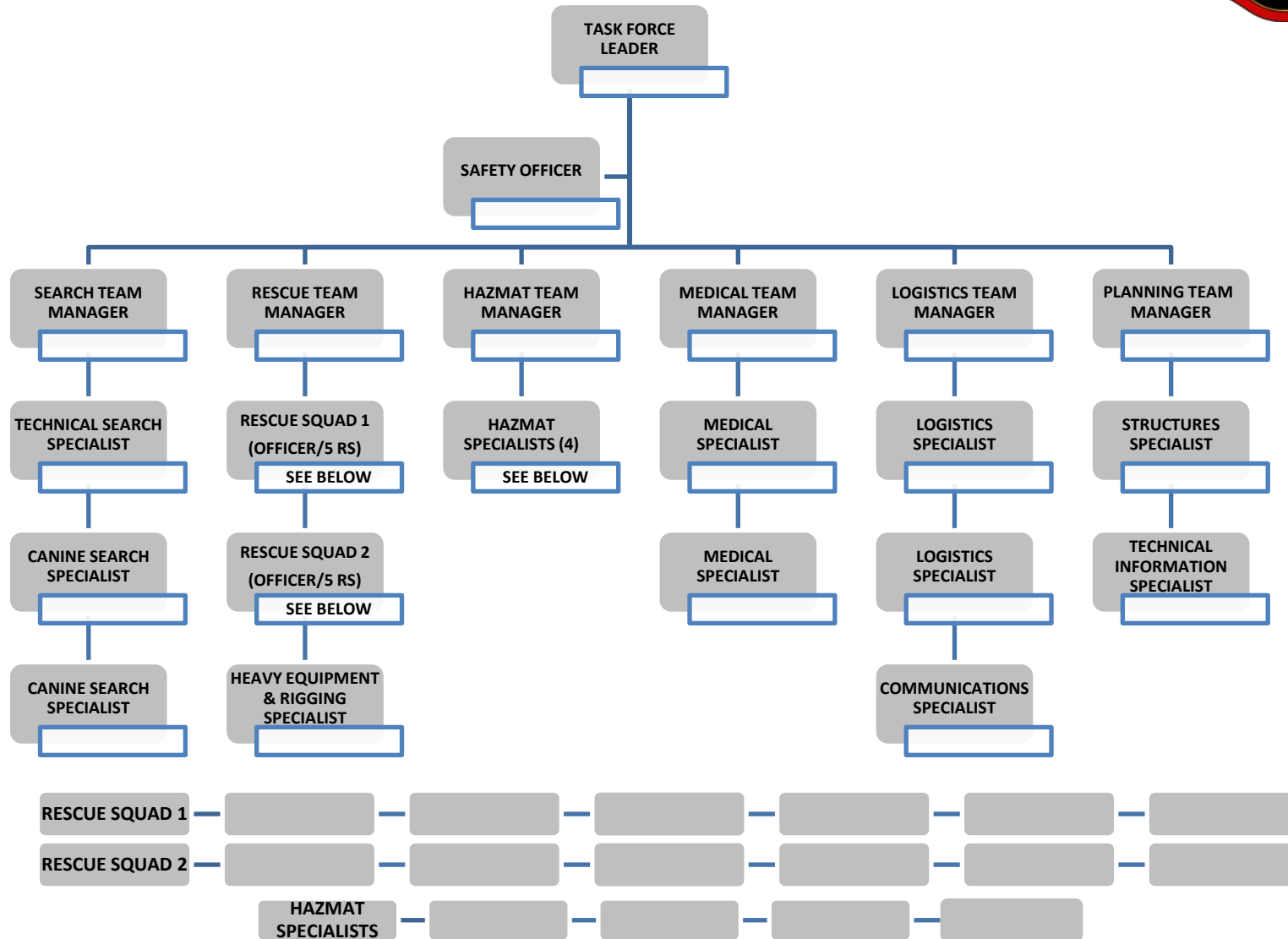
**DO #:**

**ACT. #:**



**MONTH:**

**YEAR:**



Focus on structural collapse core capability \* See current US&R resource typing document for additional details  
 Cross staffed personnel can be listed in multiple positions but should not add to your overall number of personnel